

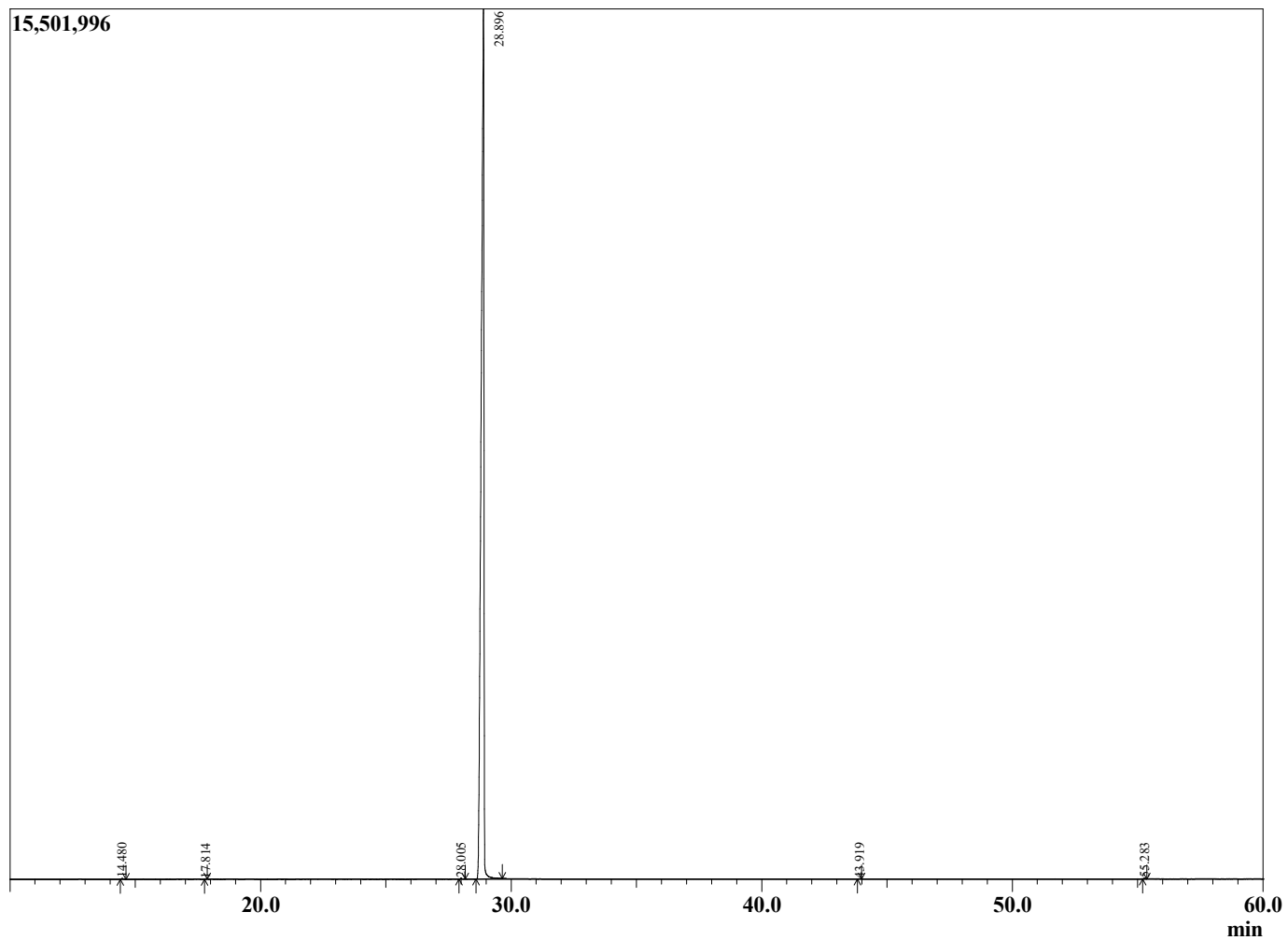
Sample Information

Sample Type : Essential Oil  
Sample Name : Gaultheria procumbens  
Injection Volume : 0.10

Wintergreen  
Lot# NEX14-XC  
Country: Nepal



Chromatogram Gaultheria procumbens



R.Time	Name	Peak Report TIC	Area%
14.480	Phenol		0.05
17.814	Limonene		0.01
28.005	Terpinen-4-ol		0.07
28.896	Methyl salicylate		99.78
43.919	beta-Caryophyllene		0.02
55.283	Dimethyl hydroxyterephthalate		0.07
			100.00